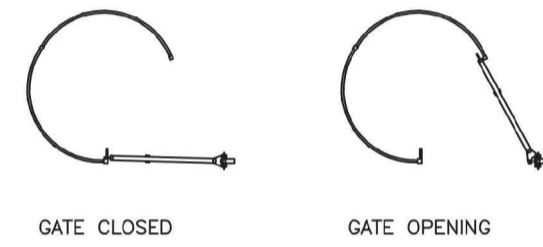
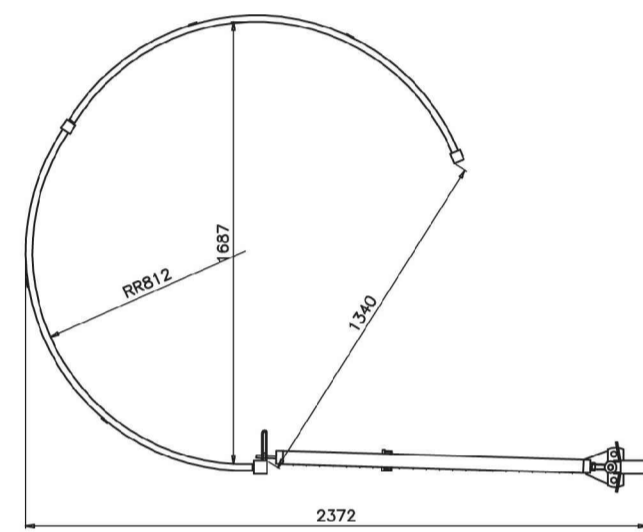
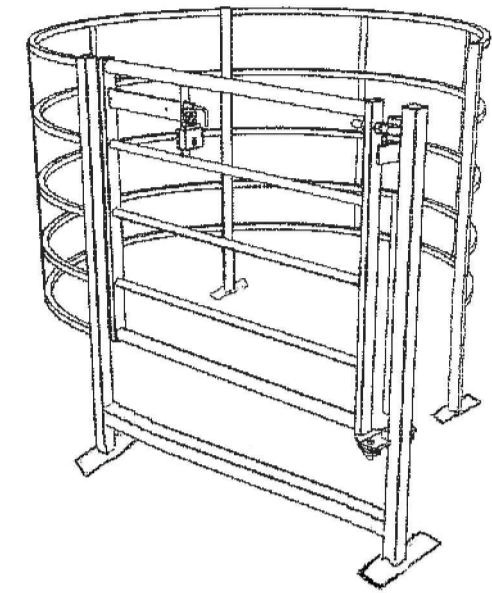
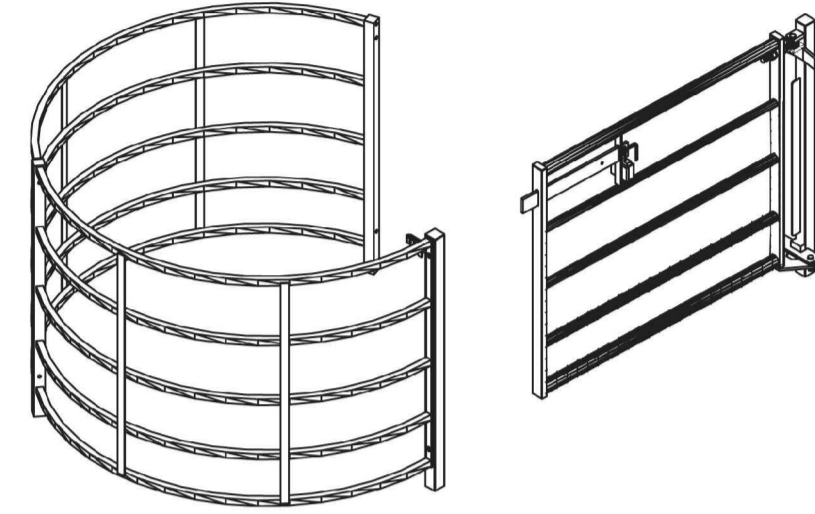
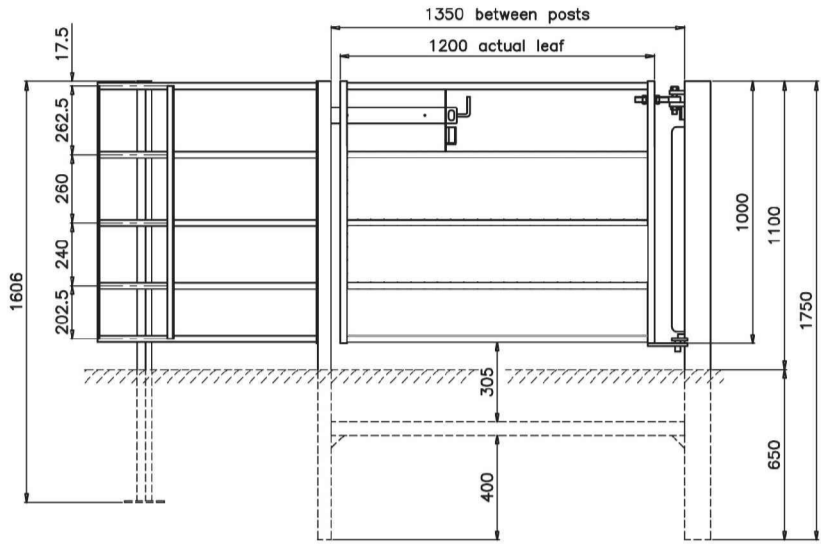


Proposed Pedestrian Kissing Gate Details Not to Scale

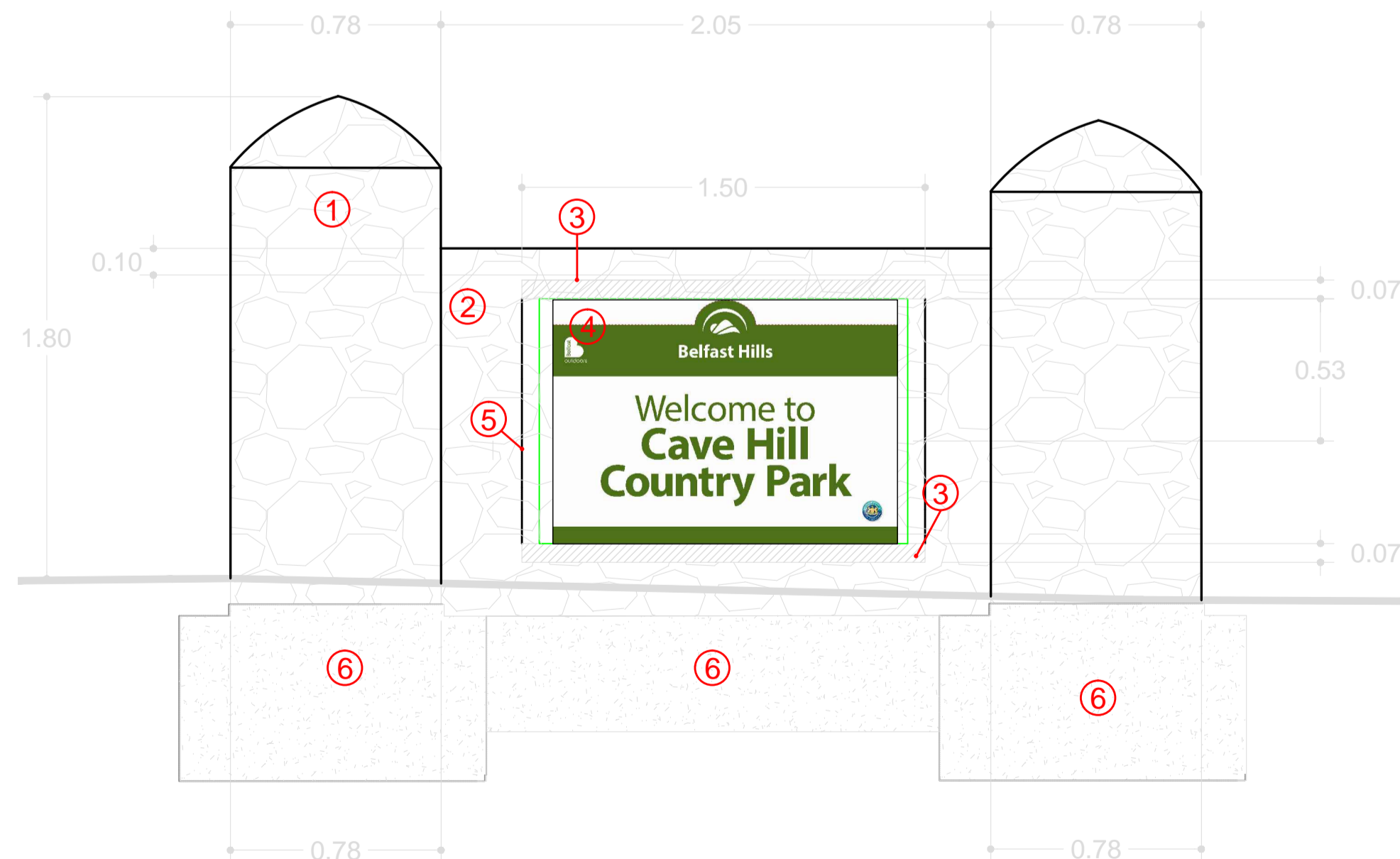


SPECIFICATION FOR PEDESTRIAN KISSING GATE
LARGE MOBILITY (WOODSTOCK) KISSING GATE TO BS 5709
 RAILS: 5 No., DIMENSIONS: 1.2m HIGH X 2.372m LONG X 1.687m WIDE, 1.2m WIDE GATE LEAF, 1.35m BETWEEN POSTS.
 SHAPE: CIRCULAR, STANDARD: BS 5709:2006
 ACCESS: SUITABLE FOR LARGE MOBILITY VEHICLES AND LARGE 3-WHEELED BABY BUGGIES.
 FIXING GATE POSTS: 4 No. 0.6 x 0.6 x 0.6m C16/20 CONCRETE FOUNDATION.
 All edges cleaned and sanded prior to finish.
 The proposed surface levels should be taken prior to fabrication and each vertical post should be adjusted in height to maintain minimum top rail deviation.
 Grades of metals section dimensions and properties to be to the appropriate British Standard, when not specified, select grades and sections appropriate for the purpose.
 Fabricate components carefully and accurately to ensure compliance with design and performance requirements.
 Do not permit contact between dissimilar metals in components that are to be fixed where moisture may be present or occur.
 Finished components to be rigid and free from distortion, cracks, burrs and sharp edges.
 Welding of galvanised, cast iron, stainless steel and mild steel as per BS EN 1011. **No welding on site to be permitted.** Remove slight distortion by light hammering, taking care not to damage surface finish.
 Renovating damaged galvanised coating as per BS EN ISO 1461.



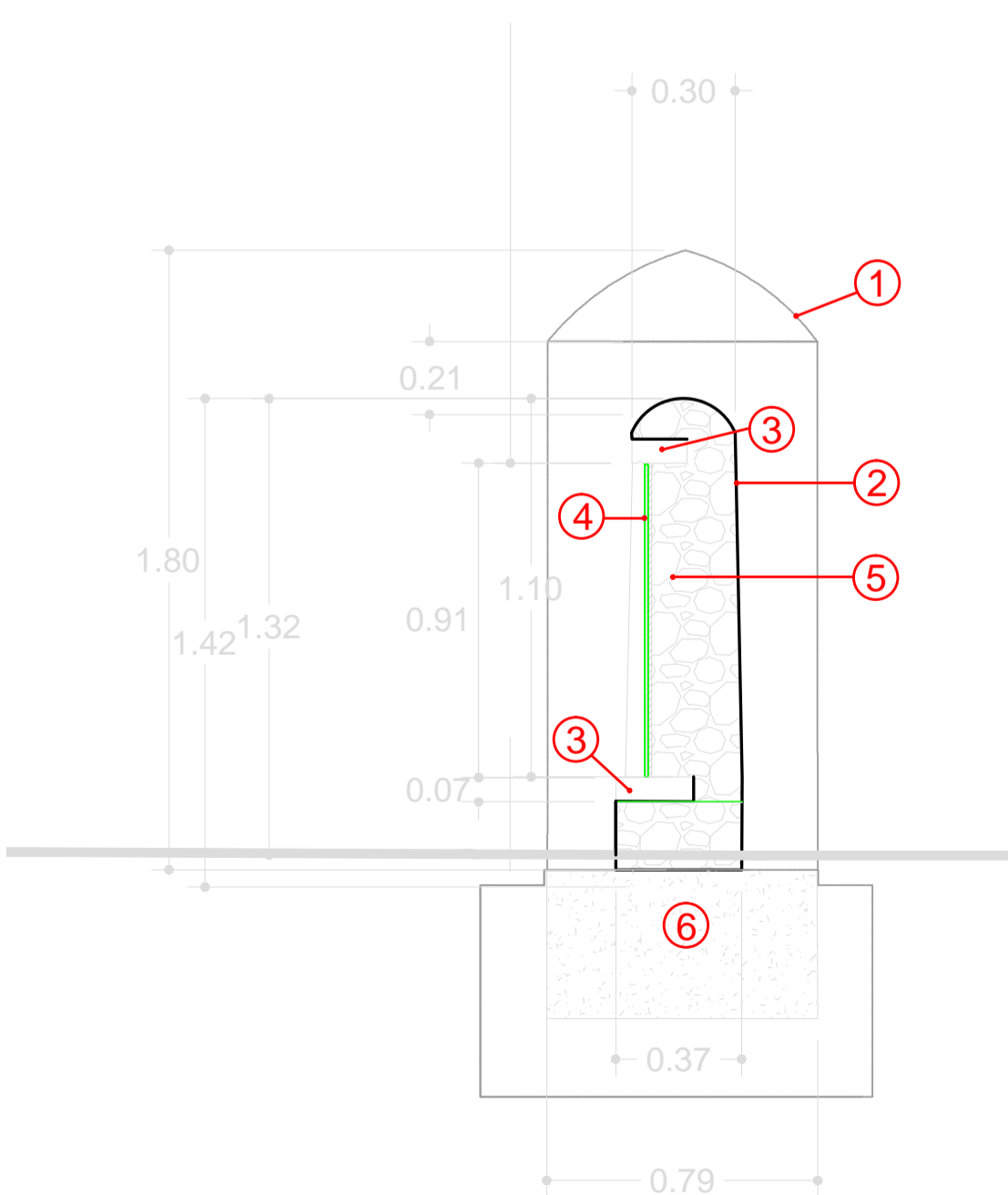
Proposed Entrance Wall Signage Scale 1:10 Elevation

- ① **Stone Gate Pillar**
1800mm minimum height above ground level, basalt natural stone work to all exposed exterior visible surfaces. Coping to be traditional style with basalt to curve to inside and pointed with mortar to match stonework. NOTE: Steel gate pillar to be constructed inside concrete and stone pillar as shown, with hinges protruding outside stonework as shown on drawing.
- ② **Stone Walling**
Coursed basalt stone facade supported by PC concrete block structure to inside face. 1300mm minimum height above ground level x 300mm width at narrowest point (top) 400mm max at widest point (bottom)
- ③ **Natural Stone Lintel**
Limestone - dimensions as shown
- ④ **Aluminium Composite Metal Signage**
Refer to signage layout detail, fixed to rendered recess in wall
- ⑤ **Rubble & Mortar**
Structural rubble to inside of wall for fixed AMC signage to. See wall cross-section for information.
- ⑥ **Concrete Foundation**
Depth to be confirmed by structural engineer

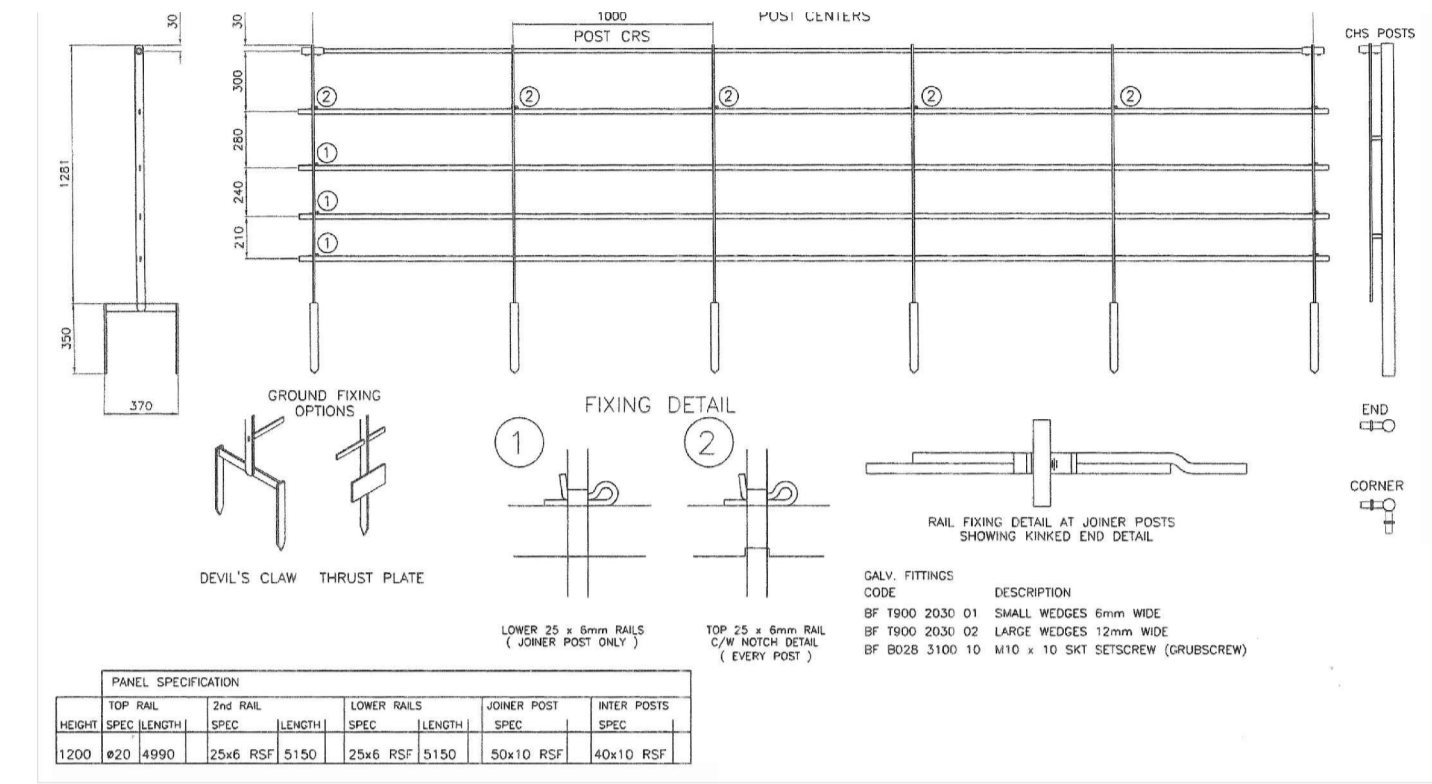
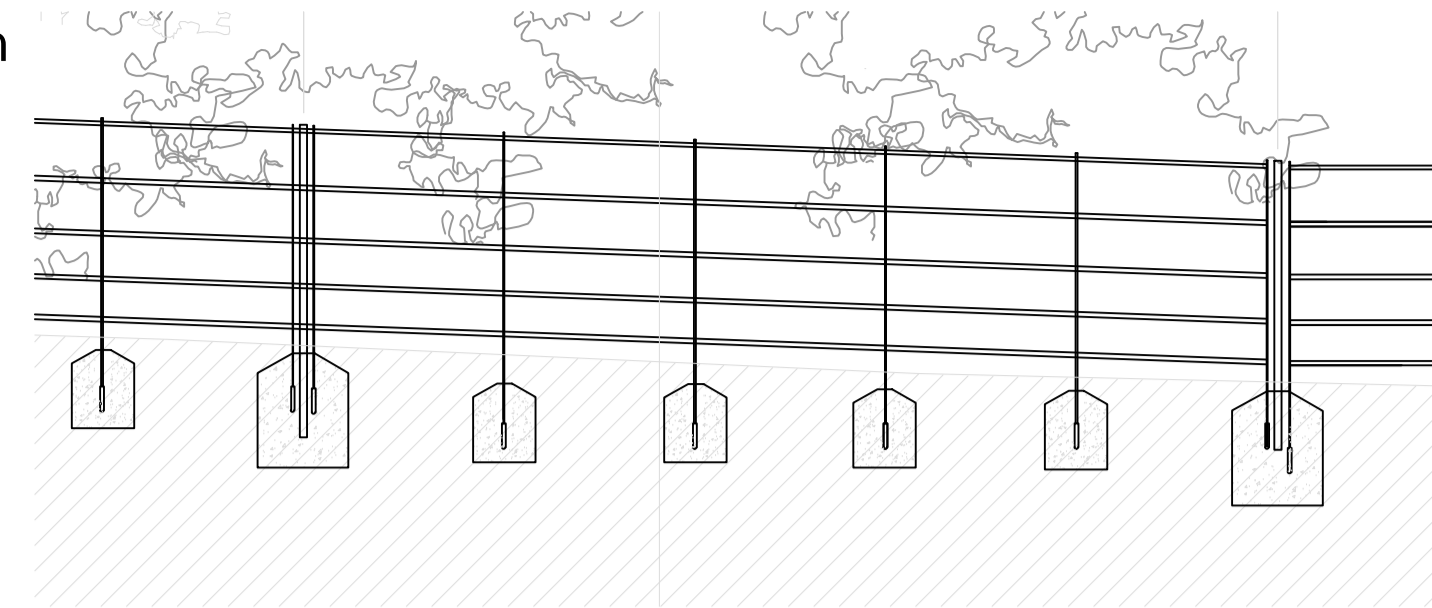


Proposed Entrance Wall & Signage Scale 1:20 Section

- ① **Support Brace**
MS galvanised & PPC black RAL 9005 flat iron bar 60mmx10mm
- ② **Latch Bolt**
MS galvanised & PPC black RAL 9005 lockable bolt shut mechanism
- ③ **Drop Bolts**
1 no. drop bolt per leaf with concrete foundations for opening and closed positions
- ④ **Hinges**
4 no. heavy duty adjustable hinges (180° opening) per leaf welded to steel beam
- ⑤ **Steel Beam**
fixed to concrete foundation as shown. Steel support column is concealed within stone pillar with hinges to protrude externally as shown.
- ⑥ **Granite sets**
Pietra granite sets: 100mmx100mmx50mm colour: Natural, Hand dressed finish fixed to concrete foundation. Tabernmore Concrete products limited or equal and approved.
- ⑦ **Concrete Foundation**
Depth to be confirmed by structural engineer



Proposed Railing Elevation Contextual Elevation Scale 1:20



SPECIFICATION FOR ESTATE FENCING

Standards to BS 3049 & BS 1722
 (To be read in conjunction with Q41, Z11, Z31)
All railings to be raked with slope. Contractor to take all detailed measurements on site. Distance between the posts depending on changes of direction and slope.
M.S. RAILINGS TREATMENT:
 Hot dip galvanized to BS EN ISO 1461.
 Pre-treatment chemical or mechanical to BS EN 13438, Annex B. The surface of the item to be painted should be clean and meticulously free from any type of oil or grease contamination.
 Power coated to BS EN 13438 and Z31, colour: black RAL 9005.
 Manufacturer: Centrewire (www.centrewire.com) or equal and approved.

ESTATE FENCING
 5 RAILS, 1.2m HIGH, TOP RAIL: Ø 20mm SOLID BAR, LOWER RAILS: 25x6mm RSF, JOINER POST: 50x10mm RSF, INTER POST: 40x10mm RSF

DOUBLE GATE ESTATE FENCING
 POSTS: Ø 114.3 CHS WITH DOME TOP, HANG STILES: 50x20mm RSF, SLAM STILES: 50x15mm RSF, MID VERTICAL: 50x10mm RSF, BOTTOM RAIL: Ø 20mm SOLID BAR, RAILS: 25x6mm RSF, BRACES: 25x6mm RSF
 FIXING GATE POSTS: 2 No. 0.6 x 0.6 x 0.6m C16/20 CONCRETE FOUNDATION. FIXING DROP BOLTS: 3 No. 0.2 x 0.2 x 0.2m C16/20 CONCRETE FOUNDATION FOR OPENING AND CLOSED POSITIONS

LARGE MOBILITY (WOODSTOCK) KISSING GATE TO BS 5709
 RAILS: 5 No., DIMENSIONS: 1.2m HIGH X 2.372m LONG X 1.687m WIDE, 1.2m WIDE GATE LEAF, 1.35m BETWEEN POSTS. SHAPE: CIRCULAR, STANDARD: BS 5709:2006
 ACCESS: SUITABLE FOR LARGE MOBILITY VEHICLES AND LARGE 3-WHEELED BABY BUGGIES.
 FIXING GATE POSTS: 4 No. 0.6 x 0.6 x 0.6m C16/20 CONCRETE FOUNDATION.

All edges cleaned and sanded prior to finish.
 The proposed surface levels should be taken prior to fabrication and each vertical post should be adjusted in height to maintain minimum top rail deviation.
 Grades of metals section dimensions and properties to be to the appropriate British Standard, when not specified, select grades and sections appropriate for the purpose.
 Fabricate components carefully and accurately to ensure compliance with design and performance requirements.
 Do not permit contact between dissimilar metals in components that are to be fixed where moisture may be present or occur.
 Finished components to be rigid and free from distortion, cracks, burrs and sharp edges.
 Welding of galvanised, cast iron and mild steel as per BS EN 1011. **No welding on site to be permitted.** Remove slight distortion by light hammering, taking care not to damage surface finish.
 Renovating damaged galvanised coating as per BS EN ISO 1461.

SPECIFICATION FOR NEW M.S. DOUBLE GATE

Standard to BS 1722-9
 (To be read in conjunction with Q40, Q41, Z11, Z31)
 Contractor to take all detailed measurements on site.

- M.S. RAILINGS AND GATES TREATMENT:**
- Hot dip galvanized to BS EN ISO 1461.
 - Pre-treatment chemical or mechanical to BS EN 13438 Annex B. The surface of the item to be painted should be clean and meticulously free from any type of oil or grease contamination.
 - Power coated to BS EN 13438 and Z31, colour: black
- Accessories:
- 1 no. drop bolt per leaf with concrete foundations for opening and closed positions and locking mechanism.
 - 4 no. heavy duty adjustable hinges (180° opening) per leaf welded to steel beam
- All edges cleaned and sanded prior to finish.
 The proposed surface levels should be taken prior to fabrication and each vertical post should be adjusted in height to maintain minimum top rail deviation.
 Grades of metals section dimensions and properties to be to the appropriate British Standard, when not specified, select grades and sections appropriate for the purpose.
 Fabricate components carefully and accurately to ensure compliance with design and performance requirements.
 Do not permit contact between dissimilar metals in components that are to be fixed where moisture may be present or occur.
 Finished components to be rigid and free from distortion, cracks, burrs and sharp edges.
 Welding of galvanised, cast iron and mild steel as per BS EN 1011. **No welding on site to be permitted.** Remove slight distortion by light hammering, taking care not to damage surface finish.
 Renovating damaged galvanised coating as per BS EN ISO 1461.

Proposed ACM Signage Layout Scale 1:10 Elevation

SPECIFICATION FOR SIGNAGE

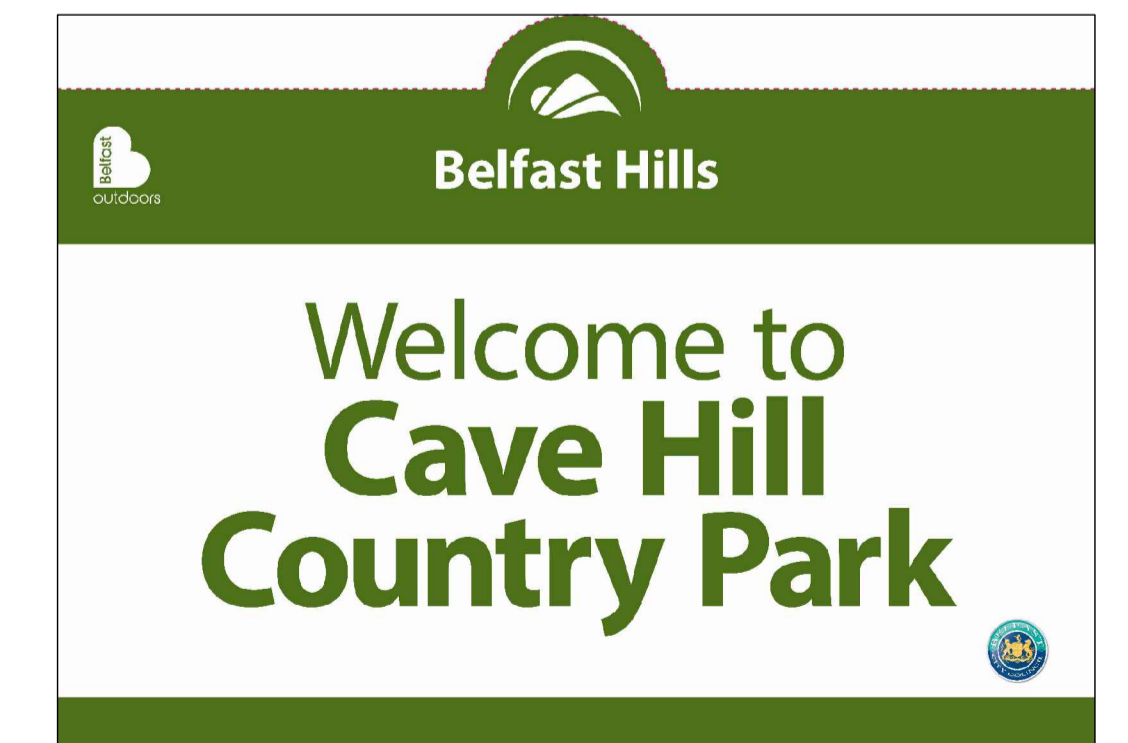
- NOTES:**
- ACM (aluminium composite material) graphics panel by Ascot Sign Systems or equal and approved. 10 year warranty against delamination, breakdown or colour fading. ACM to be 5 mm overall thickness with high definition digital print (lettering text and images as shown, but in accordance with Belfast Hills Partnership branding booklet guidelines) and finish gloss protective layer to front face.
 Typeface: refer to BHP branding for layout information font to dims shown.
 - Sign frame:
 Text colour: refer to BHP branding guidelines booklet. Background colour: White RAL 9016
 Sign: ACM panel by Ascot Sign Systems or equal and approved. Tel: 02871 860 222.
 10 year warranty against delamination, breakdown or colour fading.
 Sample panel, indicating logos and 1:1 scale text to be approved by the Clients Project Manager prior to fabrication order. All edges cleaned and sanded prior to finish.

Grades of metals section dimensions and properties to be to the appropriate British Standard, when not specified, select grades and sections appropriate for the purpose.
 Fabricate components carefully and accurately to ensure compliance with design and performance requirements.
 Do not permit contact between dissimilar metals in components that are to be fixed where moisture may be present or occur.
 Finished components to be rigid and free from distortion, cracks, burrs and sharp edges.
 Welding of galvanised, mild steel and stainless steel as per BS EN 1011. **No welding on site to be permitted.** Remove slight distortion by light hammering, taking care not to damage surface finish.
 Renovating damaged galvanised coating as per BS EN ISO 1461.

Standards to BS EN 10088 and BS EN 10296-2.

PROPOSED SIGN

Sign as per artwork provided, text, colours and logos, as per BCC and BHP branding guidelines. Fabricator to produce drawing and sample proof sign, for approval by landscape architect.



NOTES				Purpose of issue		Project Title		Drawing Title		Designed		Drawn		Checked		Approved		Date		URS Infrastructure & Environment UK Limited	
				CONSTRUCTION		CAVEHILL COUNTRY PARK ENTRANCE		DETAILS		NC		NC		CT		CA		AUG 2014		Beechill House Beechill Road, Belfast BT8 7RP T: +44 (0)28 9070 5111 F: +44 (0)28 9079 5651 www.ursglobal.com	
				CONSTRUCTION RISKS		Client				URS Internal Project No. 47062894 - 49		Scale @ A1 As shown								Drawing Number 47062894 - 49 - 604	
				MAINTENANCE / CLEANING RISK		DSD														Rev C0	
				DEMOLITION RISKS																	
				In addition to the hazard/risks normally associated with the types of work detailed on this drawing take note of above. It is assumed that all works on this drawing will be carried out by a competent contractor working, where appropriate, to an appropriate method statement.																	
				SAFETY, HEALTH AND ENVIRONMENTAL INFORMATION BOX																	
Revision Details				By		Date		Suffix													

P:\0100 - 8/20/2014 2:30 PM
 File Name: R:\LANDMARTIN\2014 PUBLIC\RELA SMALL WORKS\SET_DRAWINGS\09_CAVEHILL COUNTRY PARK ENTRANCE\01_DRAWINGS\09_CONSTRUCTION\CONSTRUCTION\09_49_604_604_01_PROPOSED LAYOUT